

---

Electric Stacker

# 12ESN



■ Photo may include optional equipment.

---

## Standard Configurations

---

### 12ESN

- Lifting Capacity : 1200 kg
- AC Drive Motor : 1.2 kW
- Lift motor : 2.2 kW
- Curtis controller
- Drive wheel : 250 x 70 mm
- Double Polyurethane Load wheel (size: 80 x 70 mm)
- Hourmeter, battery discharge indicator (BDI) & lift cut off
- Simplex mast, Lifting height 1950 mm
- Lowered Height : 2.33 m
- Ergonomic low-mounted tiller
- Overall Fork Width x Length : 570 mm x 1150 mm
- Turtle switch / crawl speed button
- Automatic drive speed reduction (lifting over 1.8 m)
- Integrated charger
- Belly Switch
- Gel battery

## Advantages

---

### SAFETY AND PRODUCTIVITY

- AC technology gives high performance and low maintenance (no carbon brushes)
- Intelligent regenerative brake system.
- Multi-functional display with BDI and hour meter etc.
- Proportional travel speed control.
- Switch shuts off liftmotor
- Turtle mode switch, for safe maneuverability with tiller in upright position
- Long tiller ensures large safety distance between operator and truck

### STRUCTURE DESIGN

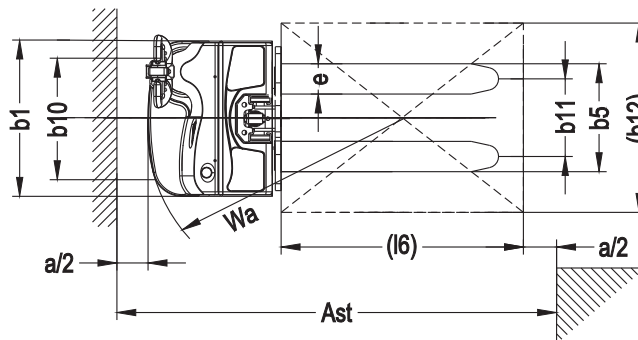
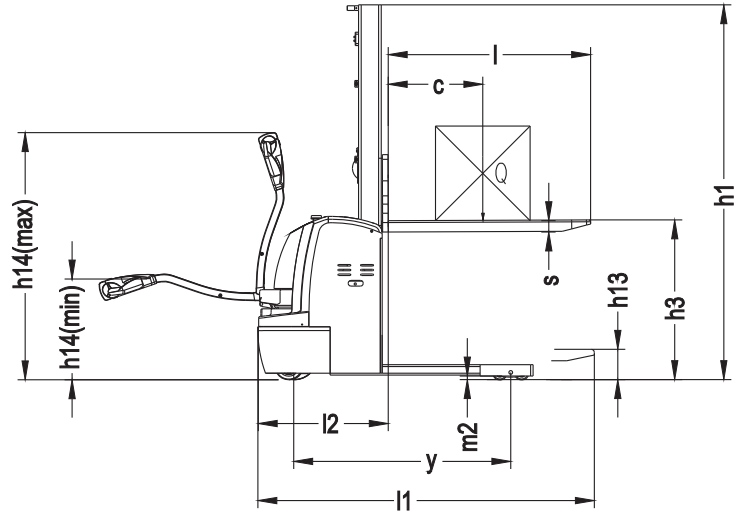
- The closed motor structure is water- and dust resistant
- Offset low mounted tiller for improved visibility

### SERVICEABILITY

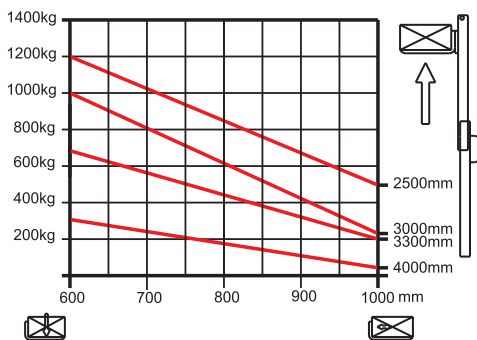
- Easy access to all components thanks to removal of 1-piece front cover
- Maintenance free gel battery

# Electric Stacker

## Dimensions



## Lifting capacity



## Option

- Lifting height 1600 mm
- Lifting height 2800 mm
- Fork length (mm): 800; 900; 1000; 1200

## Specification (according to VDI 2198)

Characteristics				
1.1	manufacturer (abbreviation)			Hyundai
1.2	Model			12ESN
1.3	Drive type			electric
1.4	Operator type			walking
1.5	Load capacity/rated load	Q	kg	1200
1.6	Load center distance	c	mm	500
1.8	Load distance	x	mm	630
1.9	Wheelbase	y	mm	1146
Weight				
2.1	Service weight (with battery)		kg	590
2.2	Axle load, front/rear, loaded		kg	790 / 1000
2.3	Axle load, front/rear, unloaded		kg	195 / 395
Wheels/Chassis				
3.1	Tyres: solid rubber, super elastic, pneumatic, polyurethane			polyurethane
3.2	Tyre size, front			φ 250 × 70
3.3	Tyre size, rear			φ 80 × 70
3.4	Additional wheels (dimensions)			φ 150 × 60
3.5	Wheels number, front/rear (x = driven wheels)			1x +1/4
3.6	Tread, front	b10	mm	520
3.7	Tread, rear	b11	mm	400
Dimension				
4.2	Height of mast, lowered	h1	mm	1980 / 2330
4.4	Lift height	h5	mm	1600 / 1950
4.5	Max. height of mast, extended	h4	mm	1980 / 2330
4.9	Min. / Max. height of operation handle, in driving position	h14	mm	670 / 1300
4.15	Height, lowered	h13	mm	90
4.19	Overall length	l1	mm	1780 / 1860
4.20	Length to fork face	l2	mm	708
4.21	Overall width of truck body	b1	mm	820
4.22	Fork dimension	s/e/l	mm	1070 / 1150
4.25	Overall width of fork	b5	mm	570
4.32	Wheelbase ground distance	m2	mm	30
4.33	Aisle width, with pallet 1000 x 1200 crosswise	Ast	mm	2180
4.34	Aisle width, with pallet 800 x 1200 lengthwise	Ast	mm	2220
4.35	Turning radius	Wa	mm	1338
Performance Data				
5.1	traveling speed, loaded/unloaded		km/h	5.3 / 5.6
5.2	Lifting speed, loaded/unloaded		m/s	0.11 / 0.19
5.3	Lowering speed, loaded/unloaded		m/s	0.16 / 0.11
5.8	Max. gradeability, loaded/unloaded			6 / 15
5.10	traveling brake			electromagnetic brake
Motor				
6.1	Driving motor power		kW	1.2 (AC)
6.2	Lifting motor power		kW	2.2
6.4	Battery voltage/rated capacity		V/Ah	24/80
6.5	Battery weight		kg	50