

Battery forklift with AC motor technology

25/30/32/35B-9U



A NEW LEVEL OF SATISFACTION FOR OWNERS AND OPERATORS

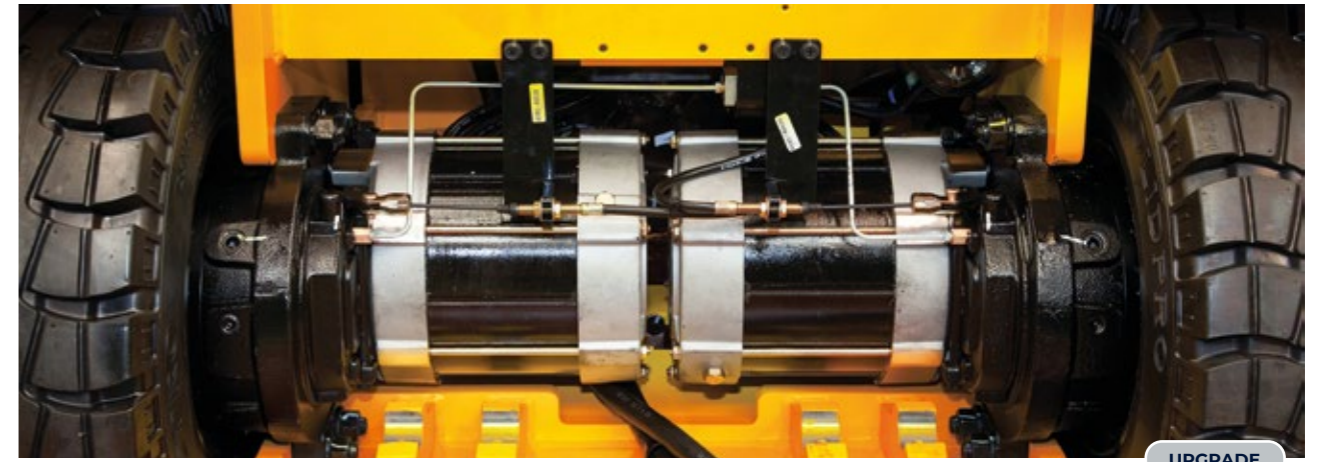
Hyundai is proud to introduce its new B-9U Series electric forklifts. These high-performing machines feature numerous upgrades, including technologies to reduce energy consumption and noise. Powertrain durability has been enhanced, the driver compartment has been redesigned for safe, comfortable operation and maintenance is easier than ever before.



Productivity & Efficiency

SMOOTH AND EFFICIENT TO BOOST YOUR PRODUCTIVITY

The B-9U Series has been enhanced with new details and technologies to improve operating performance and efficiency. The powerful dual drive motor system is combined with Electro Hydraulic Power Steering (EHPS) to ensure smooth, quiet operation with minimal maintenance.



UPGRADE

Dual drive motor system for strong driving power

The dual drive motor system consists of two separately controlled low-noise drive motors ensuring excellent drawbar pull and a short turning radius. The AC motors are virtually maintenance free.



UPGRADE

Electro Hydraulic Power Steering (EHPS)

The ZAPI EHPS system offers speed adaptive steering feedback and allows each operator to set up personalised parameters. It also reduces energy consumption and noise.



UPGRADE

Dual MiCOM ZAPI controller

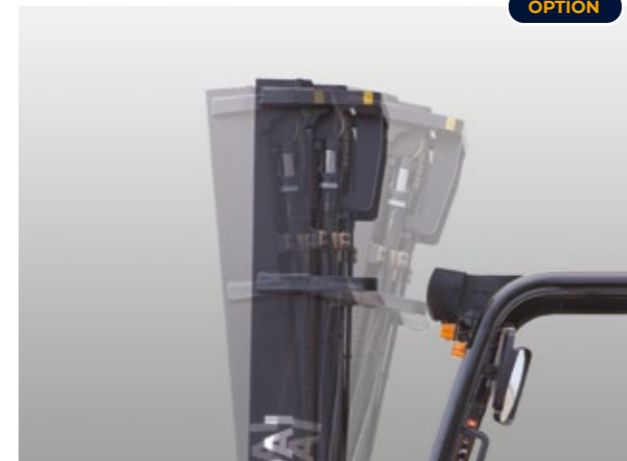
B-9U Series forklifts feature a new ZAPI ACE controller with dual MiCOM technology enabling fast communication and self-diagnosis. The split system incorporates separate controllers, with IP65 level dust and water protection, for each motor.



Auto fork levelling system

This feature ensure that mast tilting stops smoothly when the forks are in level position, improving both productivity and safety.

OPTION



Tailored performance for different working conditions

Different working modes optimise the forklift's performance depending on parameters such as speed of operation, maximum working time and operator proficiency.

- H:** High Performance mode with fast driving and lifting speeds
- N:** Normal mode with balanced performance and energy consumption
- E:** Economy mode maximising battery autonomy

Reduced energy consumption

The newly applied ZAPI EHPS system significantly reduces energy consumption. As a result, running costs are lower and operating time is extended.

Previous model: 8.5Kw/h

Upgraded model (25B-9U): 7.3Kw/h

The figures above are based on Hyundai's test results for a single charge cycle and may differ from actual working conditions.

OPTION

Productivity & Efficiency

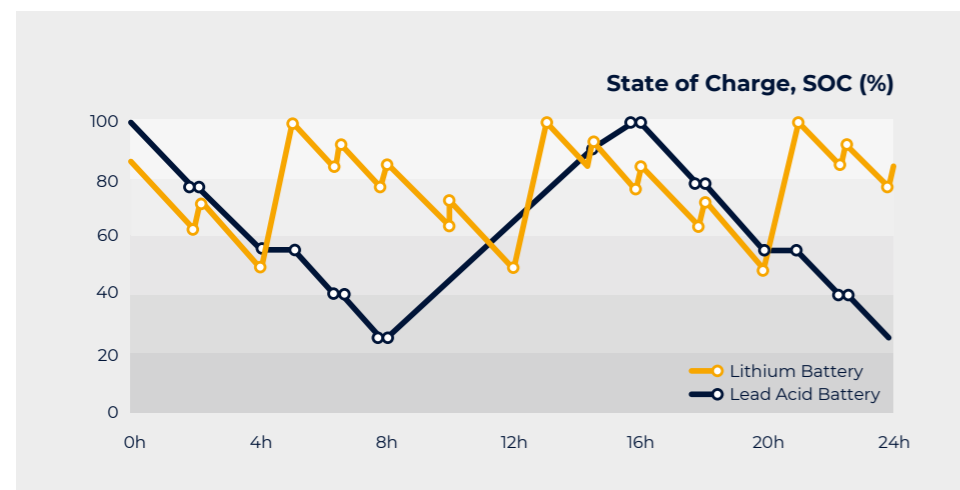
OPTIMISE YOUR MACHINE WITH A HIGH-QUALITY LI-ION BATTERY

Lithium-ion (Li-ion) batteries ensure high equipment performance and allow extended hours of continuous operation through the use of fast, high-current opportunity charging. The Hyundai Li-ion battery uses Samsung prismatic NMC cells, ensuring excellent performance and safety with virtually zero maintenance. With double the lifespan of a traditional lead-acid battery, accompanied by a 5-year warranty, it significantly lowers the total operating cost of your forklift.

Li-ION battery capacity:
- 25/30/32/35B-9U: 51.5 V/564 Ah



Comparison of charge and discharge



Why choose a Hyundai Li-ion battery?



Longer operating time

- Extended battery autonomy through use of short opportunity charges during breaks
- No need for spare batteries or charging facilities



Increased safety

- Multi-layered protection on cell
- Enclosed battery case made of high-strength steel
- No hazardous gases produced during charging process



Minimal maintenance

- No need to replenish distilled water or electrolytes
- Battery lifespan at least double that of lead acid/sulfuric acid batteries (over 4,000 cycles)
- No harmful gas emissions and no restrictions on the charging location



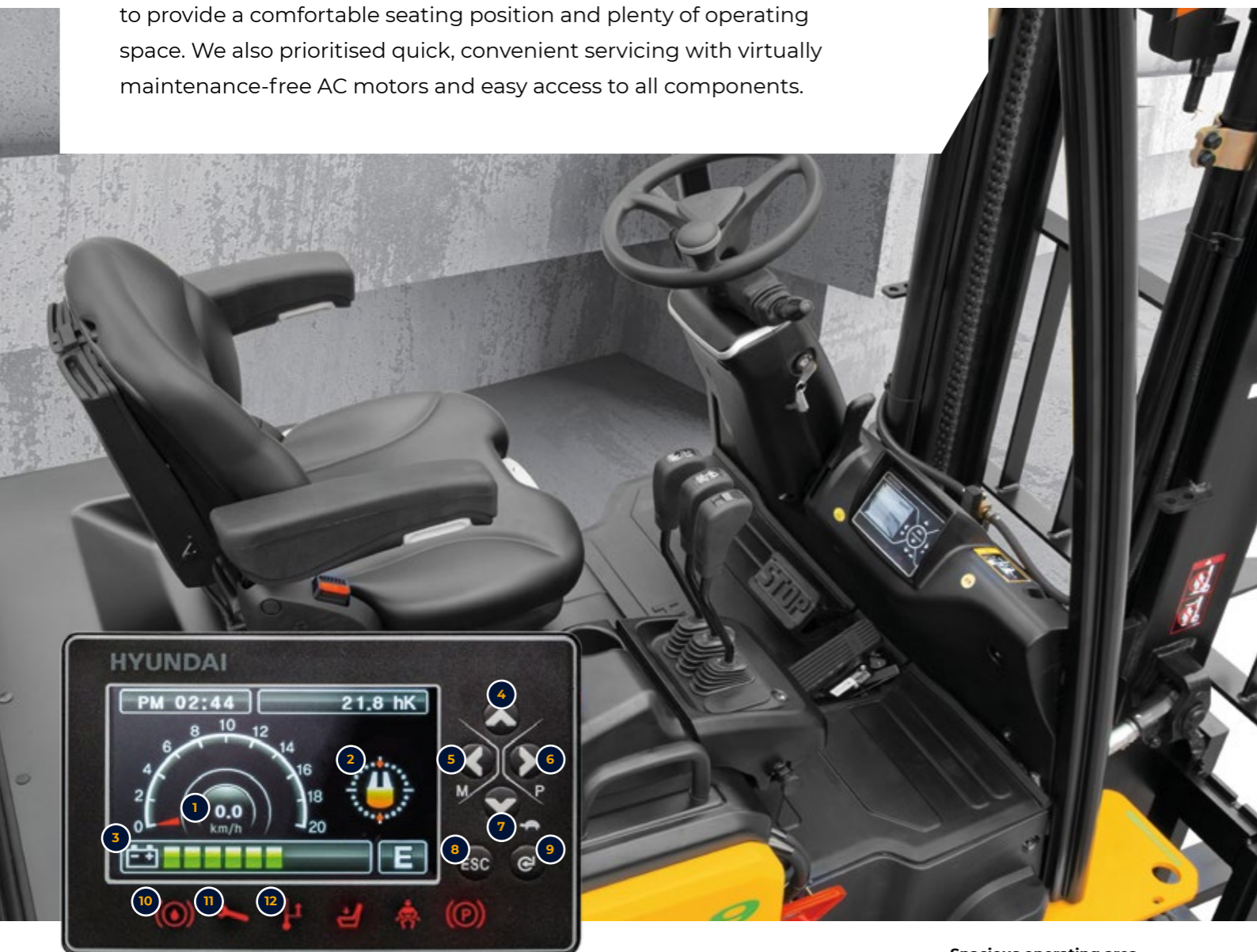
Lower costs

- Higher charging efficiency than lead acid batteries (80% → 90%)
- Zero downtime for maintenance

Operating comfort

DESIGNED FOR COMFORT AND QUICK, EASY MAINTENANCE

For the B-9U Series, we optimised ergonomics wherever possible to provide a comfortable seating position and plenty of operating space. We also prioritised quick, convenient servicing with virtually maintenance-free AC motors and easy access to all components.



Spacious operating area
The newly designed driver compartment increases operating space, visibility and overall comfort for the operator.

4.3 inch LCD colour monitor

The 4.3 inch LCD smart graphic display gives the driver an overview of essential information. The menu is available in 11 different languages. Intuitive selection buttons next to the display create the perfect tool for machine set-up and on-board diagnosis.

- | | | |
|--|----------------------------|----------------------------------|
| 1 Speed (digital) | 5 Menu/Scroll left | 10 Low brake oil warning lamp |
| 2 Steering wheel position and travel direction | 6 Performance/Scroll right | 11 Error warning lamp |
| 3 Battery discharge indicator | 7 Turtle/Scroll down | 12 High temperature warning lamp |
| 4 Scroll up | 8 ESC/Back | |
| | 9 Enter | |



OPTION

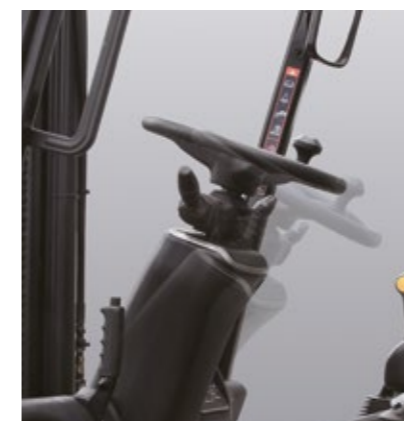
Fingertip control levers

Adjustable, ergonomically designed fingertip control levers are available as an option to increase operator comfort and productivity.



Continental SC18 solid tyres as standard

B-9U Series forklifts are equipped with Continental SC18 solid tyres, offering a long, trouble-free service life with reduced energy consumption.



Adjustable steering column

The steering column can be adjusted to the operator's preferred position using a simple lever.



Display options

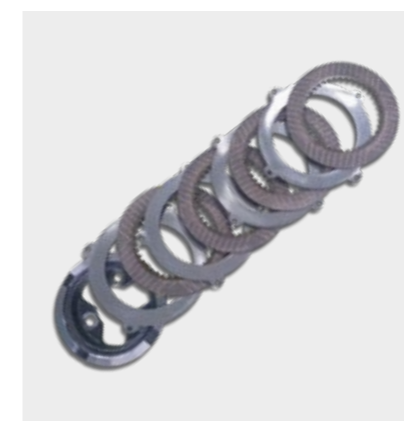
As a standard feature, the driver can choose between two display layouts. If equipped with the optional load indicator, the loaded weight is shown on the display.



OPTION

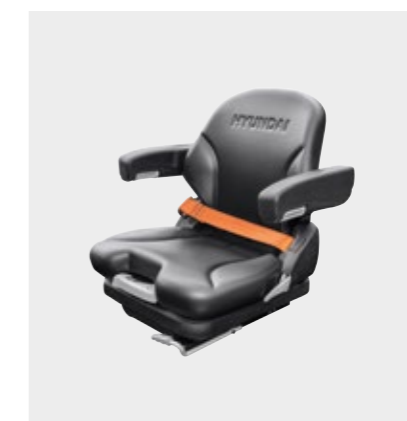
Full and semi-cabin options

The forklift can be equipped with a heated full cabin or a semi-cabin, depending on your needs.



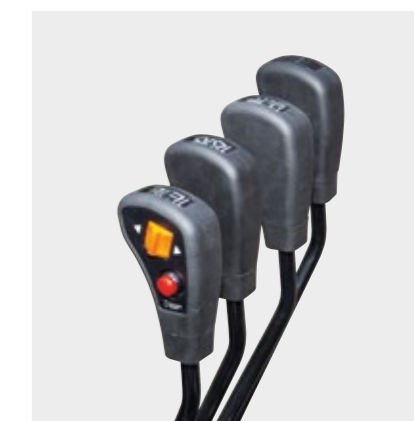
Wet disc brake

Wet disc brakes are low-maintenance, do not pollute the air and provide constant braking force without overheating.



Low-vibration comfort seat

The B-9U Series features a wide, high-quality Grammer seat allowing the operator to work comfortably and reducing fatigue. The suspension, armrests and backrest are adjustable and additional seat options are available to further customise the machine to your preferences.



Directional & horn switch on lever

The electronic directional switch integrated in the lift lever is easy to use and helps operators to work more productively.

Safety

VISIBILITY AND CONTROL FOR A SAFER WORKPLACE

The B-9U Series is designed to help operators work more safely and confidently. This is achieved through a range of control and feedback features, as well as all-round visibility.



Speed adaptive steering feedback & Curve Control

The speed adaptive steering feedback system offers:

- Light steering force at a low speed, for reduced driver effort and high productivity
- Stiffer steering force at a high speed, ensuring high driving stability and a relaxed drive

The Curve Control system limits travel speed based on the turning radius, ensuring that turn manoeuvres are smooth and precise.



Improved steering control

Steering ergonomics have been improved by synchronising the position of the steering knob.



Beacon lamp & Blue Spot light

An LED beacon lamp and Blue Spot light are available as options to increase safety for operators and pedestrians.



LED lights

LED combination lights and optional LED working lights offer excellent visibility in all circumstances, with very low energy consumption.



Anti-rollback system

B-9U Series forklifts feature an anti-rollback system that prevents the machine from rolling back on a slope and offers exceptional drive-off capabilities.



Camera options

Two camera options are available for maximum convenience:

- An automatically activated rear view camera, integrated in the cluster
- A front view camera, displayed in a separate monitor



Excellent visibility from the driver's space

The lift cylinder arrangement has been optimised to provide good visibility for the operator. A panoramic mirror is included and two camera options are available to further increase safety for the operator and pedestrians.

Walk-around

25/30/32/35B-9U

Productivity & efficiency

- ZAPI Electro Hydraulic Power Steering (EHPS) system for 17% better energy efficiency
- Dual drive motors for powerful, precise driving performance
- Performance optimised for various working conditions
- Ergonomically designed directional & horn switch located on hydraulic controls
- Single or two-door bolt-on type cabin

OPTION



Safety

- Speed adaptive steering feedback increases driving stability
- Curve Control reduces driving speed when entering a curve
- Anti-rollback feature prevents rolling backwards on a slope
- Maximum driving speed setting
- Operator Presence Sensing System (OPSS)

Durability

- Dual MiCOM ZAPI ACE Controllers (master & slave type) with improved data processing speed
- Wet disc brakes
- IP43 motor & IP65 controller

Easy maintenance

- Lateral battery exchange system (roller-type)
- Quality proven Continental SC18 solid tyre
- On-board diagnosis and parameter set-up

Parts & Warranties

HYUNDAI GENUINE PARTS AND WARRANTIES: THE BEST WAY TO PROTECT YOUR INVESTMENT

Hyundai Genuine parts, accessories and warranty programmes are specially designed to keep your investment covered. They increase uptime and maintain the performance, comfort, and convenience that are built into your equipment.



Leader in standard warranties for battery Forklifts!

Hyundai warranties are designed to give you the cover you need to build your business with confidence and peace of mind.

Best standard warranties in the industry

For extra reassurance, and to ensure maximum customer confidence, we are supplying all new battery models with best industry standard warranties.

The forklift **standard warranty covers you for two years or 3,000 hours, whichever comes first.**

Optional and extended warranty periods

In addition to this standard coverage, optional and extended warranty periods are available, allowing you to benefit from full warranty coverage for longer, and even over the full service life of your forklift.*

Forklift standard warranty*
2 years or 3,000 hours, whichever comes first.

Hyundai Genuine parts

Hyundai Genuine parts have the same design as those installed when your machine left the factory. They are subjected to rigorous quality inspections and tests to make sure they meet Hyundai's strict requirements for quality and durability.

As well as minimising downtime, this helps to ensure peak performance on every task. In the 13,000 m² warehouse, **Hyundai covers over 96% of all Genuine Parts.** With one of Europe's most advanced automated warehousing systems, we are able to maintain availability and efficient delivery of all our Genuine Parts.

A network you can rely on

HCEE prioritises quick, reliable intervention to keep your equipment running reliably. Thanks to the **extended dealer network across Europe, we will always be close by to ensure a timely and efficient solution.** Moreover, we guarantee a 24-hour delivery service across our European dealer network.

* Conditions apply. Please discuss the optimal solution for your needs with your dealer.

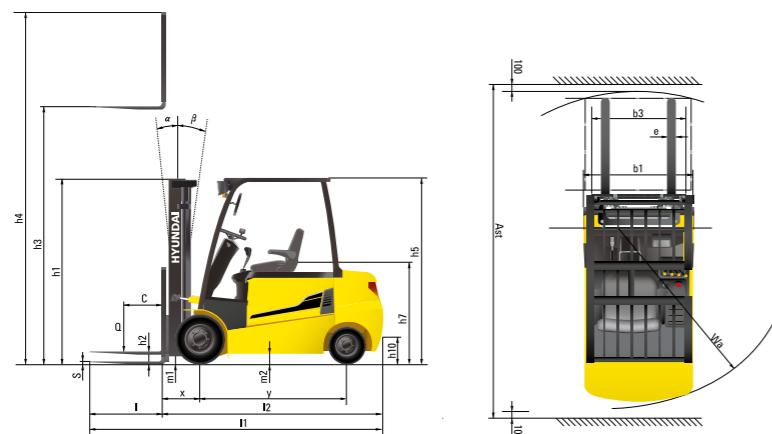


SPECIFICATIONS

| Main characteristics | | | | | | |
|----------------------|---|----------|----------|----------|----------|-------|
| 1.1 | Manufacturer (abbreviation) | Hyundai | Hyundai | Hyundai | Hyundai | |
| 1.2 | Manufacturer's type designation | 25B-9U | 30B-9U | 32B-9U | 35B-9U | |
| 1.3 | Drive : Electric (battery or mains), Diesel, Petrol, Fuel Gas | electric | electric | electric | electric | |
| 1.4 | Type of operation: Hand, Pedestrian, Standing, Seated, Order-Picker | seated | seated | seated | seated | |
| 1.5 | Load Capacity / Rated Load | kg | 2,500 | 3,000 | 3,200 | 3,500 |
| 1.6 | Load Center Distance | c mm | 500 | 500 | 500 | 500 |
| 1.8 | Load Distance, Center Of Drive Axle To Fork | x mm | 458 | 458 | 458 | 470 |
| 1.9 | Wheelbase | y mm | 1,400 | 1,600 | 1,600 | 1,600 |

| Weights | | | | | | |
|---------|-----------------------------------|----|-------------|-------------|-------------|-------------|
| 2.1 | Service weight | kg | 4,360 | 4,633 | 4,820 | 5,020 |
| 2.2 | Axle loading, loaded front/rear | kg | 6,016/844 | 6,812/820 | 7,095/925 | 7,537/983 |
| 2.3 | Axle loading, unloaded front/rear | kg | 1,805/2,555 | 2,016/2,617 | 1,980/2,840 | 1,915/3,105 |

| Tyres & chassis | | | | | |
|-----------------|---|---------|---------|---------|----------|
| 3.1 | Tyres : Solid Rubber, Superelastic, Pneumatic, Polyurethane | SE, P | SE, P | SE, P | SE, P |
| 3.2 | Tyre size, front | 23X9-10 | 23x9-10 | 23x9-10 | 23X10-12 |
| 3.3 | Tyre size, rear | 18X7-8 | 18x7-8 | 18x7-8 | 18X7-8 |
| 3.5 | Wheels, number front/rear (X = Driven Wheels) | 2x/2 | 2x/2 | 2x/2 | 2x/2 |
| 3.6 | Tread, front | mm | 993 | 993 | 1005 |
| 3.7 | Tread, rear | mm | 980 | 980 | 980 |



| Dimensions | | | | | | |
|------------|---|--------------|---------------|---------------|---------------|---------------|
| 4.1 | Tilt of mast/fork carriage forward/backward | degree | 6/10 | 6/10 | 6 / 10 | |
| 4.2 | Height, mast lowered | h1 mm | 2,162 | 2,162 | 2,232 | 2,243 |
| 4.3 | Free lift | h2 mm | 115 | 115 | 115 | 115 |
| 4.4 | Lift height | h3 mm | 3,300 | 3,300 | 3,300 | 3,300 |
| 4.5 | Height, mast extended | h4 mm | 4,485 | 4,485 | 4,485 | 4,485 |
| 4.7 | Height of overhead guard (cabin) | h5 mm | 2,230 (2,276) | 2,230 (2,276) | 2,230 (2,276) | 2,230 (2,276) |
| 4.8 | Seat height / stand height rel. to sip | h7 mm | 1,275 | 1,275 | 1,275 | 1,275 |
| 4.12 | Coupling height | h10 mm | 325 | 325 | 325 | 325 |
| 4.19 | Overall length | l1 mm | 3,345 | 3,535 | 3,553 | 3,640 |
| 4.20 | Length to face of forks | l2 mm | 2,295 | 2,485 | 2,503 | 2,590 |
| 4.21 | Overall width | b1 mm | 1,200 | 1,200 | 1,200 | 1,250 |
| 4.22 | Fork dimensions | s x e x l mm | 45x100x1,050 | 45x122x1,050 | 45x122x1,050 | 45x122x1,050 |
| 4.23 | Fork carriage ISO 2328, class / type A, B | | II /A | III /A | III /A | III /A |
| 4.24 | Fork carriage width | b3 mm | 1,102 | 1,102 | 1,102 | 1,102 |
| 4.31 | Ground clearance, below mast, loaded | m1 mm | 117 | 117 | 117 | 128 |
| 4.32 | Ground clearance, center of wheelbase | m2 mm | 130 | 130 | 130 | 130 |
| 4.33 | Aisle width for pallets 1,000 X 1,200 crossways (L X W) | Ast mm | 3,637 | 3,829 | 3,843 | 3,896 |
| 4.34 | Aisle width of pallets 800 X 1,200 crossways (W X L) | Ast mm | 3,803 | 4,009 | 4,023 | 4,076 |
| 4.35 | Turning radius | Wa mm | 1,940 | 2,150 | 2,165 | 2,205 |

| Performance data | | | | | | |
|------------------|------------------------------------|-------|---------------|---------------|---------------|---------------|
| 5.1 | Travel speed, loaded/unloaded | km/h | 17/18 | 17/18 | 17/18 | 17/18 |
| 5.2 | Lift speed, loaded/unloaded | mm/s | 410/610 | 340/500 | 330/500 | 300/460 |
| 5.3 | Lowering speed, loaded/unloaded | mm/s | 500/450 | 500/450 | 500/450 | 500/450 |
| 5.6 | Max. drawbar pull, loaded/unloaded | N | 14,710/14,690 | 14,640/14,700 | 14,580/14,660 | 14,580/14,410 |
| 5.8 | Max. gradeability, loaded/unloaded | % (°) | 20 (12.4) | 19 (10.8) | 18 (10.2) | 17 (9.6) |
| 5.10 | Service brake | | Hydraulic | Hydraulic | Hydraulic | Hydraulic |

| Electric motor | | | | | | |
|----------------|--------------------------------------|------|---------------|-----------------|-----------------|-----------------|
| 6.1 | Drive motor rating S2 60 Min | kW | 7.0x2 | 7.0x2 | 7.0x2 | 7.0x2 |
| 6.2 | Lift motor rating at S3 15% | kW | 17 | 17 | 17 | 17 |
| 6.4 | Battery voltage, nominal capacity K5 | V/Ah | 48 / 720 | 48 / 810-900 | 48 / 810-900 | 48 / 810-900 |
| 6.5 | Battery weight (Min.) | kg | 1,090 | 1,150 | 1,150 | 1,150 |
| 6.7 | Battery compartment dimensions L/W/H | mm | 1,035/802/540 | 1,035/1,000/540 | 1,035/1,000/540 | 1,035/1,000/540 |

| Additional data | | | | | | |
|-----------------|-----------------------|----|----|----|----|----|
| 8.1 | Type of drive control | AC | AC | AC | AC | AC |

MAST SPECIFICATIONS

| 25B-9U | | | | | | | | | | | | | |
|---------------------------|---------------------|---|--------------------------|------------------|-------------------|-------------------------------|------------|-----|--|--|---|-------------------------|-------|
| Mast type | Maximum fork height | Maximum mast height, extended with backrest | Overall height (lowered) | Free lift height | | | Tilt angle | | Load capacity (500 mm LC) w/o side shift | Load capacity (500 mm LC) hook-on side shift | Maximum lifting height with rated capacity STD attachment | Truck weight (unloaded) | |
| | | | | W/ load backrest | W/o load backrest | W/o load backrest (3/4-SPOOL) | Fwd | Bwd | | | | | |
| | mm | mm | mm | mm | mm | mm | deg | deg | kg | kg | mm | kg | |
| 2-stage limited free lift | V300 | 3,005 | 4,185 | 2,012 | 115 | 115 | 115 | 6 | 10 | 2,500 | 2,500 | 3,005 | 4,339 |
| | ※V330 | 3,305 | 4,485 | 2,162 | 115 | 115 | 115 | 6 | 10 | 2,500 | 2,500 | 3,305 | 4,362 |
| | V350 | 3,505 | 4,685 | 2,262 | 115 | 115 | 115 | 6 | 10 | 2,500 | 2,500 | 3,505 | 4,376 |
| | V370 | 3,705 | 4,885 | 2,412 | 115 | 115 | 115 | 6 | 10 | 2,500 | 2,475 | 3,705 | 4,398 |
| | V400 | 4,005 | 5,185 | 2,562 | 115 | 115 | 115 | 6 | 10 | 2,500 | 2,425 | 4,005 | 4,419 |
| | V450 | 4,505 | 5,685 | 2,862 | 115 | 115 | 115 | 6 | 6 | 2,400 | 2,325 | 3,650 | 4,498 |
| | V500 | 5,005 | 6,185 | 3,112 | 115 | 115 | 115 | 6 | 6 | 2,350 | 2,275 | 3,500 | 4,535 |
| 2-stage full free lift | VF295 | 2,976 | 4,156 | 2,012 | 832 | 1,379 | 1,379 | 6 | 6 | 2,500 | 2,500 | 2,976 | 4,386 |
| | VF/VS325 | 3,276 | 4,456 | 2,162 | 982 | 1,529 | 1,529 | 6 | 6 | 2,500 | 2,500 | 3,276 | 4,419 |
| 3-stage full free lift | TF400 | 4,005 | 5,185 | 1,912 | 732 | 1,279 | 1,279 | 6 | 6 | 2,500 | 2,425 | 4,005 | 4,538 |
| | TF430 | 4,305 | 5,485 | 2,012 | 832 | 1,379 | 1,379 | 6 | 6 | 2,450 | 2,375 | 3,700 | 4,560 |
| | TF450 | 4,505 | 5,685 | 2,112 | 932 | 1,479 | 1,479 | 6 | 6 | 2,400 | 2,325 | 3,550 | 4,582 |
| | TF470 | 4,705 | 5,885 | 2,162 | 982 | 1,529 | 1,529 | 6 | 6 | 2,350 | 2,275 | 3,450 | 4,594 |
| | TF500 | 5,005 | 6,185 | 2,262 | 1,082 | 1,629 | 1,629 | 6 | 6 | 1,880 | 1,850 | 3,400 | 4,618 |
| | TF550 | 5,505 | 6,685 | 2,462 | 1,282 | 1,829 | 1,829 | 6 | 6 | 1,550 | 1,430 | 3,300 | 4,659 |
| | TF600 | 6,005 | 7,185 | 2,662 | 1,482 | 2,029 | 2,029 | 6 | 6 | 1,400 | 1,280 | 3,200 | 4,698 |
| | TF650 | 6,505 | 7,685 | 2,862 | 1,682 | 2,061 | 1,921 | 3 | 3 | 1,350 | 1,230 | 3,050 | 4,737 |
| | TF700 | 7,005 | 8,185 | 3,062 | 1,882 | 2,261 | 2,121 | 3 | 3 | 1,150 | 930 | 2,950 | 4,773 |
| | TS400 | 4,005 | 5,185 | 1,912 | 732 | 1,279 | 1,279 | 6 | 6 | 2,500 | 2,425 | 4,005 | 4,538 |
| | TS430 | 4,305 | 5,485 | 2,012 | 832 | 1,379 | 1,379 | 6 | 6 | 2,450 | 2,375 | 3,700 | 4,560 |
| | TS450 | 4,505 | 5,685 | 2,112 | 932 | 1,479 | 1,479 | 6 | 6 | 2,400 | 2,325 | 3,550 | 4,582 |
| | TS470 | 4,705 | 5,885 | 2,162 | 982 | 1,529 | 1,529 | 6 | 6 | 2,350 | 2,275 | 3,450 | 4,594 |
| | TS500 | 5,005 | 6,185 | 2,262 | 1,082 | 1,629 | 1,629 | 6 | 6 | 1,880 | 1,850 | 3,400 | 4,618 |
| TS550 | 5,505 | 6,685 | 2,462 | 1,282 | 1,829 | 1,829 | 6 | 6 | 1,550 | 1,430 | 3,300 | 4,659 | |
| TS700 | 7,005 | 8,185 | 3,062 | 1,882 | 2,254 | 2,114 | 3 | 3 | 1,150 | 930 | 2,950 | 4,773 | |
| 4-stage full free lift | QF610 | 6,115 | 7,295 | 2,147 | 967 | 1,413 | 1,462 | 3 | 3 | 1,650 | 1,480 | 2,900 | 4,912 |
| | QF700 | 7,015 | 8,195 | 2,447 | 1,267 | 1,713 | 1,762 | 3 | 3 | 1,300 | 980 | 2,600 | 5,002 |
| | QF790 | 7,915 | 9,095 | 2,747 | 1,567 | 2,114 | 1,762 | 3 | 3 | 750 | 480 | 2,300 | 5,148 |

※ TF-Mast : Wide visible 3-stage full free lift mast with 1 free lift cylinder
 ※ TS-Mast : Wide visible 3-stage full free lift mast with 2 free lift cylinders

※ : Standard

MAST SPECIFICATIONS

| 30B-9U | | | | | | | | | | | | | |
|---------------------------|---------------------|---|--------------------------|------------------|-------------------|-------------------------------|------------|-----|--|--|---|-------------------------|-------|
| Mast type | Maximum fork height | Maximum mast height, extended with backrest | Overall height (lowered) | Free lift height | | | Tilt angle | | Load capacity (500 mm LC) w/o side shift | Load capacity (500 mm LC) hook-on side shift | Maximum lifting height with rated capacity STD attachment | Truck weight (unloaded) | |
| | | | | W/ load backrest | W/o load backrest | W/o load backrest (3/4-SPOOL) | Fwd | Bwd | | | | | |
| | mm | mm | mm | mm | mm | mm | deg | deg | kg | kg | mm | kg | |
| 2-stage limited free lift | V300 | 3,005 | 4,185 | 2,012 | 115 | 115 | 115 | 6 | 10 | 3,000 | 3,000 | 3,005 | 4,614 |
| | ※V330 | 3,305 | 4,485 | 2,162 | 115 | 115 | 115 | 6 | 10 | 3,000 | 3,000 | 3,305 | 4,633 |
| | V350 | 3,505 | 4,685 | 2,262 | 115 | 115 | 115 | 6 | 10 | 3,000 | 3,000 | 3,505 | 4,650 |
| | V370 | 3,705 | 4,885 | 2,412 | 115 | 115 | 115 | 6 | 10 | 3,000 | 3,000 | 3,705 | 4,672 |
| | V400 | 4,005 | 5,185 | 2,562 | 115 | 115 | 115 | 6 | 10 | 3,000 | 3,000 | 4,005 | 4,694 |
| | V450 | 4,505 | 5,685 | 2,862 | 115 | 115 | 115 | 6 | 6 | 3,000 | 2,950 | 4,505 | 4,772 |
| | V500 | 5,005 | 6,185 | 3,112 | 115 | 115 | 115 | 6 | 6 | 2,900 | 2,775 | 4,650 | 4,809 |
| 2-stage full free lift | VF295 | 2,976 | 4,156 | 2,012 | 832 | 1,379 | 1,379 | 6 | 6 | 3,000 | 3,000 | 2,976 | 4,634 |
| | VF/VS325 | 3,276 | 4,456 | 2,162 | 982 | 1,529 | 1,529 | 6 | 6 | 3,000 | 2,950 | 3,276 | 4,667 |
| 3-stage full free lift | TF400 | 4,005 | 5,185 | 1,912 | 732 | 1,217 | 1,181 | 6 | 6 | 3,000 | 3,000 | 4,005 | 4,801 |
| | TF430 | 4,305 | 5,485 | 2,012 | 832 | 1,317 | 1,281 | 6 | 6 | 3,000 | 2,950 | 4,305 | 4,821 |
| | TF450 | 4,505 | 5,685 | 2,112 | 932 | 1,417 | 1,417 | 6 | 6 | 3,000 | 2,875 | 4,505 | 4,848 |
| | TF470 | 4,705 | 5,885 | 2,162 | 982 | 1,467 | 1,431 | 6 | 6 | 2,950 | 2,825 | 4,500 | 4,863 |
| | TF500 | 5,005 | 6,185 | 2,262 | 1,082 | 1,567 | 1,531 | 6 | 6 | 2,250 | 2,180 | 4,400 | 4,889 |
| | TF550 | 5,505 | 6,685 | 2,462 | 1,282 | 1,767 | 1,767 | 6 | 6 | 1,750 | 1,570 | 4,300 | 4,931 |
| | TF600 | 6,005 | 7,185 | 2,662 | 1,482 | 1,967 | 1,967 | 6 | 6 | 1,450 | 1,270 | 4,200 | 4,971 |
| | TF650 | 6,505 | 7,685 | 2,862 | 1,682 | 2,061 | 1,921 | 3 | 3 | 1,400 | 1,220 | 4,100 | 5,012 |
| | TF700 | 7,005 | 8,185 | 3,062 | 1,882 | 2,261 | 2,121 | 3 | 3 | 1,200 | 1,020 | 4,000 | 5,052 |
| | TS400 | 4,005 | 5,185 | 1,912 | 732 | 1,217 | 1,153 | 6 | 6 | 3,000 | 3,000 | 4,005 | 4,801 |
| | TS430 | 4,305 | 5,485 | 2,012 | 832 | 1,317 | 1,253 | 6 | 6 | 3,000 | 2,950 | 4,305 | 4,821 |
| | TS450 | 4,505 | 5,685 | 2,112 | 932 | 1,417 | 1,403 | 6 | 6 | 3,000 | 2,875 | 4,505 | 4,848 |
| | TS470 | 4,705 | 5,885 | 2,162 | 982 | 1,467 | 1,403 | 6 | 6 | 2,950 | 2,825 | 4,500 | 4,863 |
| | TS500 | 5,005 | 6,185 | 2,262 | 1,082 | 1,567 | 1,503 | 6 | 6 | 2,250 | 2,180 | 4,400 | 4,889 |
| TS550 | 5,505 | 6,685 | 2,462 | 1,282 | 1,767 | 1,753 | 6 | 6 | 1,750 | 1,570 | 4,300 | 4,931 | |
| TS700 | 7,005 | 8,185 | 3,062 | 1,882 | 2,233 | 2,093 | 3 | 3 | 1,450 | 1,270 | 4,200 | 4,971 | |
| 4-stage full free lift | QF610 | 6,115 | 7,295 | 2,147 | 967 | 1,514 | 1,514 | 3 | 3 | 1,700 | 1,520 | 3,550 | 5,153 |
| | QF700 | 7,015 | 8,195 | 2,447 | 1,267 | 1,814 | 1,814 | 3 | 3 | 1,200 | 1,020 | 3,300 | 5,243 |
| | QF790 | 7,915 | 9,095 | 2,747 | 1,567 | 1,987 | 1,834 | 3 | 3 | 700 | 520 | 3,000 | 5,390 |

※ TF-Mast : Wide visible 3-stage full free lift mast with 1 free lift cylinder
 ※ TS-Mast : Wide visible 3-stage full free lift mast with 2 free lift cylinders

※ : Standard

MAST SPECIFICATIONS

| 32B-9U | | | | | | | | | | | | | |
|---------------------------|---------------------|---|--------------------------|------------------|-------------------|-------------------------------|------------|-----|--|--|---|-------------------------|-------|
| Mast type | Maximum fork height | Maximum mast height, extended with backrest | Overall height (lowered) | Free lift height | | | Tilt angle | | Load capacity (500 mm LC) w/o side shift | Load capacity (500 mm LC) hook-on side shift | Maximum lifting height with rated capacity STD attachment | Truck weight (unloaded) | |
| | | | | W/ load backrest | W/o load backrest | W/o load backrest (3/4-SPOOL) | Fwd | Bwd | | | | | |
| | | | | mm | mm | mm | deg | deg | | | | | kg |
| 2-stage limited free lift | V300 | 3,005 | 4,185 | 2,082 | 115 | 115 | 115 | 6 | 10 | 3,200 | 3,200 | 3,005 | 4,799 |
| | ※V330 | 3,305 | 4,485 | 2,232 | 115 | 115 | 115 | 6 | 10 | 3,200 | 3,200 | 3,305 | 4,820 |
| | V350 | 3,505 | 4,685 | 2,332 | 115 | 115 | 115 | 6 | 10 | 3,200 | 3,075 | 3,505 | 4,828 |
| | V370 | 3,705 | 4,885 | 2,482 | 115 | 115 | 115 | 6 | 10 | 3,190 | 3,065 | 3,660 | 4,846 |
| | V400 | 4,005 | 5,185 | 2,632 | 115 | 115 | 115 | 6 | 10 | 3,120 | 2,995 | 3,650 | 4,863 |
| | V450 | 4,505 | 5,685 | 2,932 | 115 | 115 | 115 | 6 | 6 | 3,000 | 2,875 | 3,450 | 4,933 |
| | V500 | 5,005 | 6,185 | 3,182 | 115 | 115 | 115 | 6 | 6 | 2,900 | 2,775 | 3,300 | 4,962 |
| 2-stage full free lift | VF295 | 2,976 | 4,156 | 2,082 | 913 | 1,377 | 1,377 | 6 | 6 | 3,200 | 3,200 | 2,976 | 4,846 |
| | VF/ VS325 | 3,276 | 4,456 | 2,232 | 1,063 | 1,527 | 1,527 | 6 | 6 | 3,200 | 3,200 | 3,276 | 4,869 |
| 3-stage full free lift | TF400 | 4,005 | 5,185 | 1,982 | 802 | 1,212 | 1,212 | 6 | 6 | 3,120 | 2,995 | 3,650 | 5,021 |
| | TF430 | 4,305 | 5,485 | 2,082 | 902 | 1,312 | 1,312 | 6 | 6 | 3,060 | 2,935 | 3,620 | 5,030 |
| | TF450 | 4,505 | 5,685 | 2,182 | 1,002 | 1,412 | 1,412 | 6 | 6 | 3,010 | 2,885 | 3,600 | 5,072 |
| | TF470 | 4,705 | 5,885 | 2,232 | 1,052 | 1,462 | 1,462 | 6 | 6 | 2,980 | 2,855 | 3,570 | 5,087 |
| | TF500 | 5,005 | 6,185 | 2,332 | 1,152 | 1,562 | 1,562 | 6 | 6 | 2,500 | 2,390 | 3,550 | 5,111 |
| | TF550 | 5,505 | 6,685 | 2,532 | 1,352 | 1,762 | 1,762 | 6 | 6 | 2,200 | 2,020 | 3,500 | 5,156 |
| | TF600 | 6,005 | 7,185 | 2,732 | 1,552 | 1,962 | 1,962 | 6 | 6 | 1,500 | 1,320 | 3,450 | 5,200 |
| | TF650 | 6,505 | 7,685 | 2,932 | 1,752 | 2,162 | 2,061 | 3 | 3 | 1,450 | 1,280 | 3,400 | 5,244 |
| | TF700 | 7,005 | 8,185 | 3,132 | 1,952 | 2,362 | 2,261 | 3 | 3 | 1,250 | 1,080 | 3,300 | 5,289 |
| | TS400 | 4,005 | 5,185 | 1,982 | 802 | 1,212 | 1,212 | 6 | 6 | 3,120 | 2,995 | 3,650 | 5,021 |
| | TS430 | 4,305 | 5,485 | 2,082 | 902 | 1,312 | 1,312 | 6 | 6 | 3,060 | 2,935 | 3,620 | 5,030 |
| | TS450 | 4,505 | 5,685 | 2,182 | 1,002 | 1,412 | 1,412 | 6 | 6 | 3,010 | 2,885 | 3,600 | 5,072 |
| | TS470 | 4,705 | 5,885 | 2,232 | 1,052 | 1,462 | 1,462 | 6 | 6 | 2,980 | 2,855 | 3,570 | 5,087 |
| | TS500 | 5,005 | 6,185 | 2,332 | 1,152 | 1,562 | 1,562 | 6 | 6 | 2,500 | 2,390 | 3,550 | 5,111 |
| | TS550 | 5,505 | 6,685 | 2,532 | 1,352 | 1,762 | 1,762 | 6 | 6 | 2,200 | 2,020 | 3,500 | 5,156 |
| TS600 | 6,005 | 7,185 | 2,732 | 1,552 | 1,962 | 1,962 | 6 | 6 | 1,500 | 1,320 | 3,450 | 5,200 | |
| TS650 | 6,505 | 7,685 | 2,932 | 1,752 | 2,162 | 2,033 | 3 | 3 | 1,450 | 1,280 | 3,400 | 5,244 | |
| TS700 | 7,005 | 8,185 | 3,132 | 1,952 | 2,362 | 2,233 | 3 | 3 | 1,250 | 1,080 | 3,300 | 5,289 | |
| 4-stage full free lift | QF610 | 6,115 | 7,295 | 2,136 | 967 | 1,514 | 1,514 | 3 | 3 | 1,800 | 1,620 | 3,200 | 5,368 |
| | QF700 | 7,015 | 8,195 | 2,436 | 1,267 | 1,814 | 1,814 | 3 | 3 | 1,300 | 1,120 | 3,000 | 5,458 |
| | QF790 | 7,915 | 9,095 | 2,736 | 1,567 | 2,070 | 1,917 | 3 | 3 | 800 | 375 | 2,800 | 5,604 |

※ TF-Mast : Wide visible 3-stage full free lift mast with 1 free lift cylinder
 ※ TS-Mast : Wide visible 3-stage full free lift mast with 2 free lift cylinders

※ : Standard

MAST SPECIFICATIONS

| 35B-9U | | | | | | | | | | | | | |
|---------------------------|---------------------|---|--------------------------|------------------|-------------------|-------------------------------|------------|-----|--|--|---|-------------------------|-------|
| Mast type | Maximum fork height | Maximum mast height, extended with backrest | Overall height (lowered) | Free lift height | | | Tilt angle | | Load capacity (500 mm LC) w/o side shift | Load capacity (500 mm LC) hook-on side shift | Maximum lifting height with rated capacity STD attachment | Truck weight (unloaded) | |
| | | | | W/ load backrest | W/o load backrest | W/o load backrest (3/4-SPOOL) | Fwd | Bwd | | | | | |
| | | | | mm | mm | mm | deg | deg | | | | | kg |
| 2-stage limited free lift | V300 | 3,005 | 4,185 | 2,093 | 115 | 115 | 115 | 6 | 10 | 3,500 | 3,500 | 3,005 | 4,999 |
| | ※V330 | 3,305 | 4,485 | 2,243 | 115 | 115 | 115 | 6 | 10 | 3,500 | 3,500 | 3,305 | 5,020 |
| | V350 | 3,505 | 4,685 | 2,343 | 115 | 115 | 115 | 6 | 10 | 3,500 | 3,500 | 3,505 | 5,028 |
| | V370 | 3,705 | 4,885 | 2,493 | 115 | 115 | 115 | 6 | 10 | 3,500 | 3,500 | 3,705 | 5,046 |
| | V400 | 4,005 | 5,185 | 2,643 | 115 | 115 | 115 | 6 | 10 | 3,500 | 3,430 | 4,005 | 5,063 |
| | V450 | 4,505 | 5,685 | 2,943 | 115 | 115 | 115 | 6 | 6 | 3,450 | 3,300 | 4,200 | 5,133 |
| | V500 | 5,005 | 6,185 | 3,193 | 115 | 115 | 115 | 6 | 6 | 3,300 | 3,150 | 4,000 | 5,162 |
| 2-stage full free lift | VF295 | 2,976 | 4,165 | 2,093 | 913 | 1,377 | 1,377 | 6 | 6 | 3,500 | 3,500 | 2,976 | 5,046 |
| | VF/ VS325 | 3,276 | 4,456 | 2,243 | 1,063 | 1,527 | 1,527 | 6 | 6 | 3,500 | 3,430 | 3,276 | 5,069 |
| 3-stage full free lift | TF400 | 4,005 | 5,185 | 1,993 | 813 | 1,277 | 1,277 | 6 | 6 | 3,500 | 3,350 | 4,005 | 5,221 |
| | TF430 | 4,305 | 5,485 | 2,093 | 913 | 1,377 | 1,377 | 6 | 6 | 3,450 | 3,300 | 3,950 | 5,230 |
| | TF450 | 4,505 | 5,685 | 2,193 | 1,013 | 1,477 | 1,477 | 6 | 6 | 3,400 | 3,250 | 3,850 | 5,272 |
| | TF470 | 4,705 | 5,885 | 2,243 | 1,063 | 1,527 | 1,527 | 6 | 6 | 3,350 | 3,200 | 3,750 | 5,287 |
| | TF500 | 5,005 | 6,185 | 2,343 | 1,163 | 1,627 | 1,627 | 6 | 6 | 2,650 | 2,500 | 3,700 | 5,311 |
| | TF550 | 5,505 | 6,685 | 2,543 | 1,363 | 1,827 | 1,827 | 6 | 6 | 2,380 | 2,250 | 3,650 | 5,356 |
| | TF600 | 6,005 | 7,185 | 2,743 | 1,563 | 2,027 | 2,027 | 6 | 6 | 1,700 | 1,550 | 3,600 | 5,400 |
| | TF650 | 6,505 | 7,685 | 2,943 | 1,763 | 2,201 | 2,061 | 3 | 3 | 1,590 | 1,450 | 3,350 | 5,444 |
| | TF700 | 7,005 | 8,185 | 3,143 | 1,963 | 2,401 | 2,261 | 3 | 3 | 1,350 | 1,250 | 3,200 | 5,489 |
| | TS370 | 3,705 | 4,885 | 1,893 | 713 | 1,177 | 1,177 | 6 | 6 | 3,500 | 3,430 | 3,705 | 5,199 |
| | TS400 | 4,005 | 5,185 | 1,993 | 813 | 1,277 | 1,277 | 6 | 6 | 3,500 | 3,350 | 4,005 | 5,221 |
| | TS430 | 4,305 | 5,485 | 2,093 | 913 | 1,377 | 1,377 | 6 | 6 | 3,450 | 3,300 | 3,950 | 5,230 |
| | TS450 | 4,505 | 5,685 | 2,193 | 1,013 | 1,477 | 1,477 | 6 | 6 | 3,400 | 3,250 | 3,850 | 5,272 |
| | TS470 | 4,705 | 5,885 | 2,243 | 1,063 | 1,527 | 1,527 | 6 | 6 | 3,350 | 3,200 | 3,750 | 5,287 |
| | TS500 | 5,005 | 6,185 | 2,343 | 1,163 | 1,627 | 1,627 | 6 | 6 | 2,650 | 2,500 | 3,700 | 5,311 |
| TS550 | 5,505 | 6,685 | 2,543 | 1,363 | 1,827 | 1,827 | 6 | 6 | 2,380 | 2,250 | 3,650 | 5,356 | |
| TS600 | 6,005 | 7,185 | 2,743 | 1,563 | 2,027 | 2,027 | 6 | 6 | 1,700 | 1,550 | 3,600 | 5,400 | |
| TS650 | 6,505 | 7,685 | 2,943 | 1,763 | 2,201 | 2,061 | 3 | 3 | 1,590 | 1,450 | 3,350 | 5,444 | |
| TS700 | 7,005 | 8,185 | 3,143 | 1,963 | 2,373 | 2,233 | 3 | 3 | 1,350 | 1,250 | 3,200 | 5,489 | |
| 4-stage full free lift | QF610 | 6,115 | 7,295 | 2,147 | 967 | 1,514 | 1,514 | 3 | 3 | 1,920 | 1,800 | 3,100 | 5,568 |
| | QF700 | 7,015 | 8,195 | 2,447 | 1,267 | 1,814 | 1,814 | 3 | 3 | 1,410 | 1,300 | 2,900 | 5,658 |
| | QF790 | 7,915 | 9,095 | 2,747 | 1,567 | 2,070 | 1,917 | 3 | 3 | 800 | 700 | 2,700 | 5,804 |

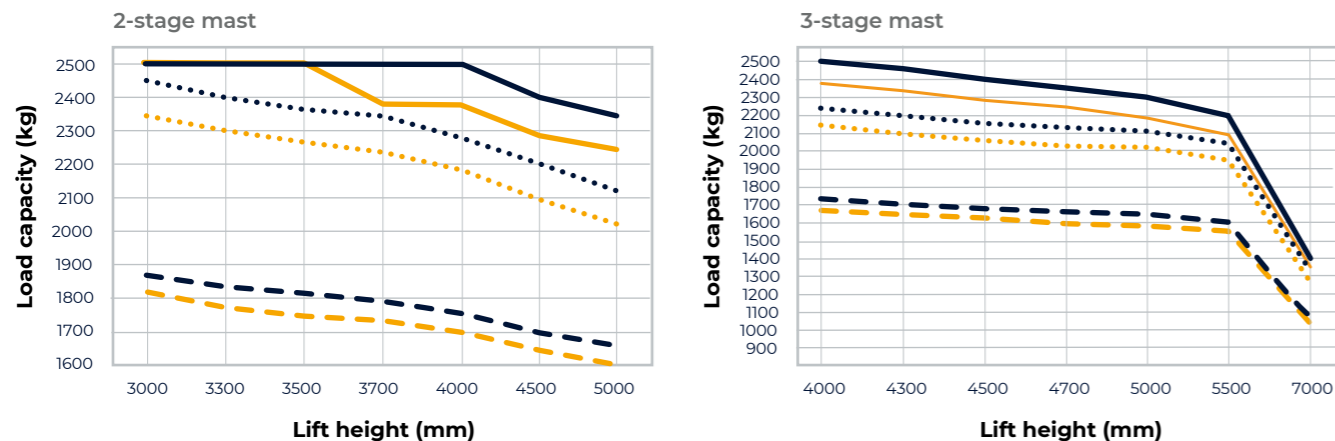
※ TF-Mast : Wide visible 3-stage full free lift mast with 1 free lift cylinder
 ※ TS-Mast : Wide visible 3-stage full free lift mast with 2 free lift cylinders

※ : Standard

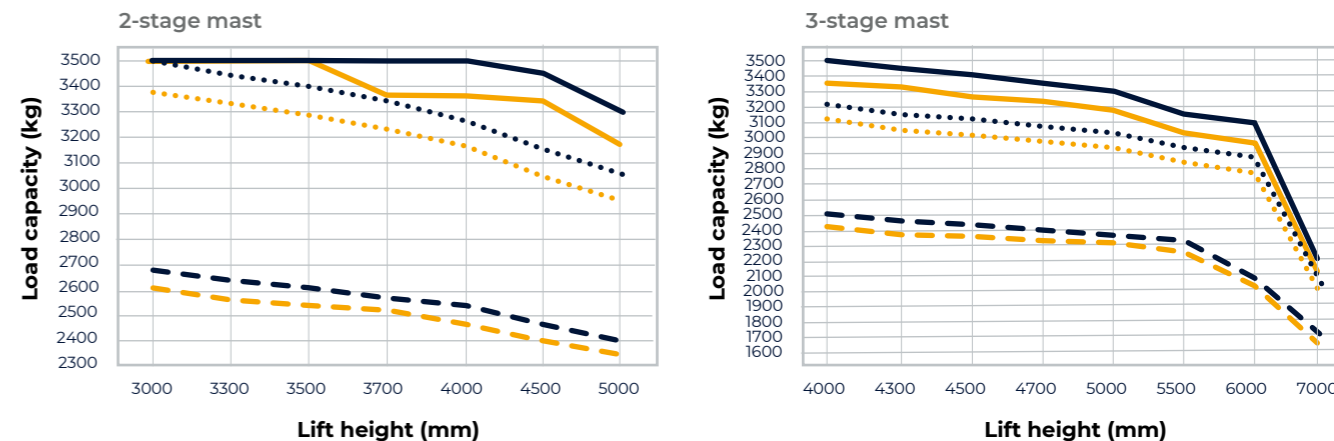
LOAD CAPACITY

- LC500 mm Intergrated side shift
- LC500 mm No attachment
- LC600 mm Intergrated side shift
- LC600 mm No attachment
- - - LC1000 mm Intergrated side shift
- - - LC1000 mm No attachment

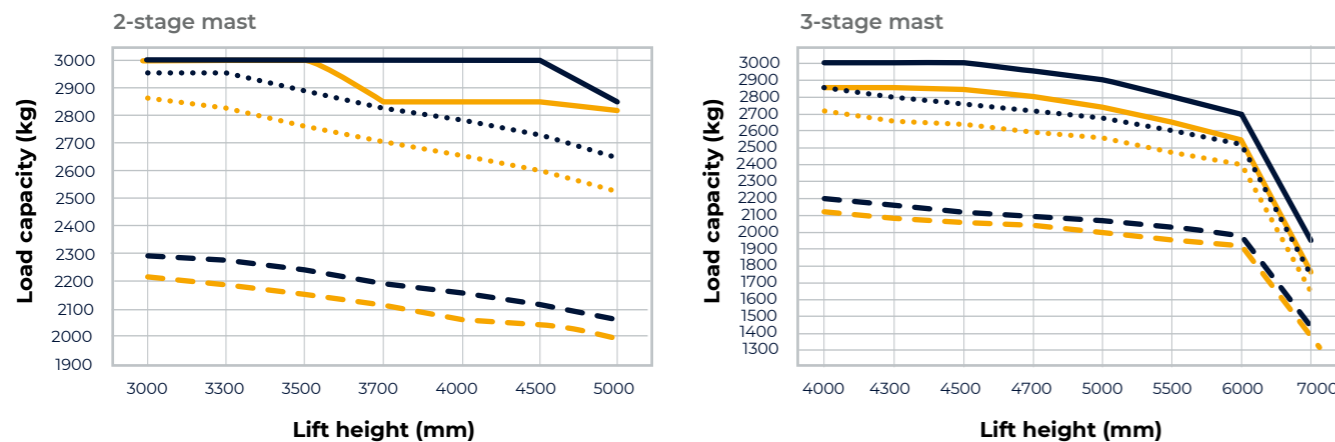
25B-9U



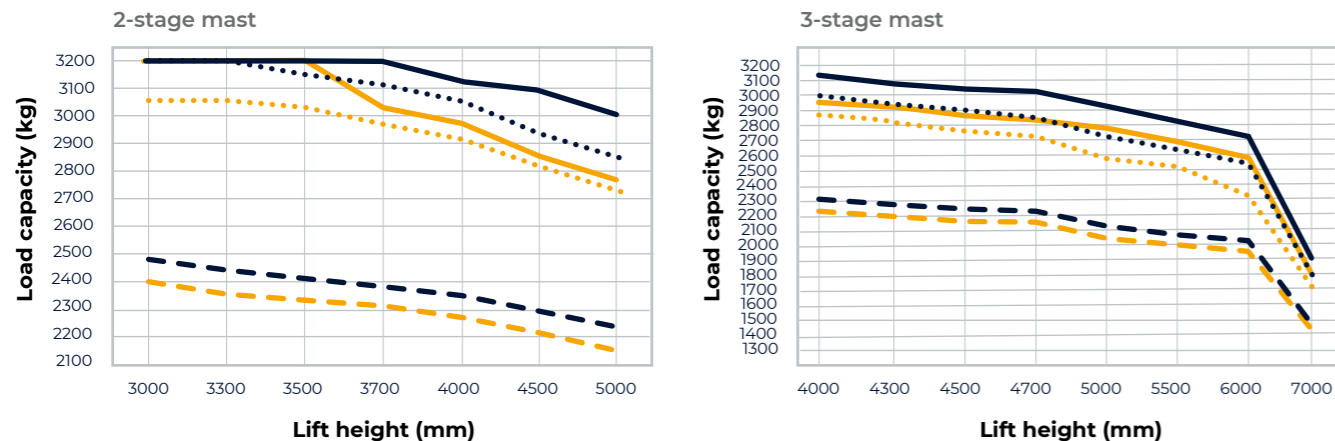
35B-9U



30B-9U



32B-9U



STANDARD AND OPTIONAL EQUIPMENT

| Equipment | STD | OPT |
|---------------------------------|-----|-----|
| Fork (mm) - 25B-9U | | |
| 900 | | • |
| 1,000 | | • |
| 1,050 | | • |
| 1,200 | • | |
| 1,350 | | • |
| 1,500 | | • |
| 1,650 | | • |
| 1,800 | | • |
| 2,100 | | • |
| Fork (mm) - 30/32/35B-9U | | |
| 900 | | • |
| 1,050 | • | |
| 1,150 | | • |
| 1,200 | | • |
| 1,350 | | • |
| 1,500 | | • |
| 1,650 | | • |
| 1,800 | | • |
| 1,970 | | • |
| 2,120 | | • |
| 2,300 | | • |
| 2,400 | | • |

| Equipment | STD | OPT |
|--|-----|-----|
| Integral side shift | | • |
| Integral fork-positionner (revolution-kit) | | • |
| Fingertip control | | • |
| Tyre: | | |
| Solid | • | |
| Pneumatic / non-marking wide [25/30/32B-9U : Front (23X10-12)] | | • |
| Basic cold storage: applicable to work conditions of up to -30°C | | • |
| M.C.V.: | | |
| 3-spool | • | |
| 4-spool | | • |
| Auto fork leveling | | • |
| Load weight indicator | | • |
| Cabin (one-door & two-door) with heater, semi-cabin options | | • |
| Vertical battery removal | | • |

All specifications in these tables are based on 900 mm forks.



- * Standard and optional equipment may vary by country. Contact your Hyundai dealer for more information.
- * The machine may vary according to international standards. European specifications may differ from Korean specifications mentioned in the brochures.
- * The photos may include attachments and optional equipment that are not available in your area.
- * Materials and specifications are subject to change without advance notice.
- * All imperial measurements are rounded off to the nearest pound or inch.

Hyundai Construction Equipment Europe NV
Hyundailaan 4, 3980 Tessenderlo, Belgium
Tel: (+32) 14-56-2200 Fax: (+32) 14-59-3405

Doc. nr.: EN-202101 Rev.0

Contact your Hyundai dealer.
[hyundai-mh.eu](https://www.hyundai-mh.eu)



Address

A large, empty white rectangular box intended for the user to enter their address.